



Immersive VERT™

Immersive VERT™ systems provide you with a life size 3D visualization of a radiation therapy treatment room. Immersive VERT™ uses 3D rear projection so that trainees and tutors may walk freely around the virtual treatment room. These systems are ideal for classroom teaching as well as hands-on training for individuals and small groups.

Vertual provides a complete installation and support service, from the bespoke design of your Immersive VERT™ auditorium, installation of the VERT™ hardware, training, system maintenance and user support. Our ongoing development programme for VERT™ will keep VERT™ up to date with new RT developments and broaden its usefulness; thus adding value to your investment.



Immersive VERT™ with screen size of 4.8 x 2.1m

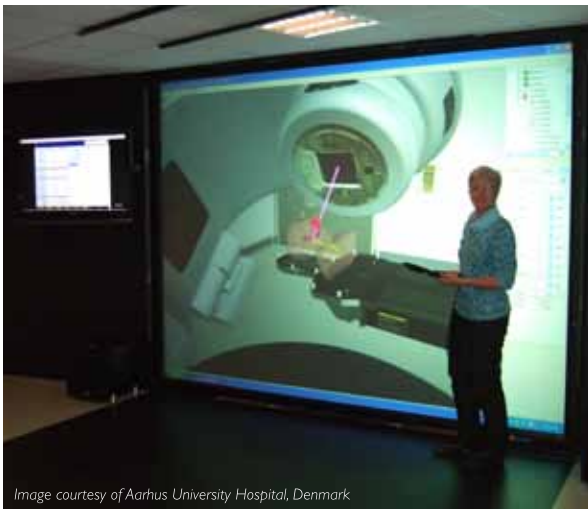


Image courtesy of Aarhus University Hospital, Denmark

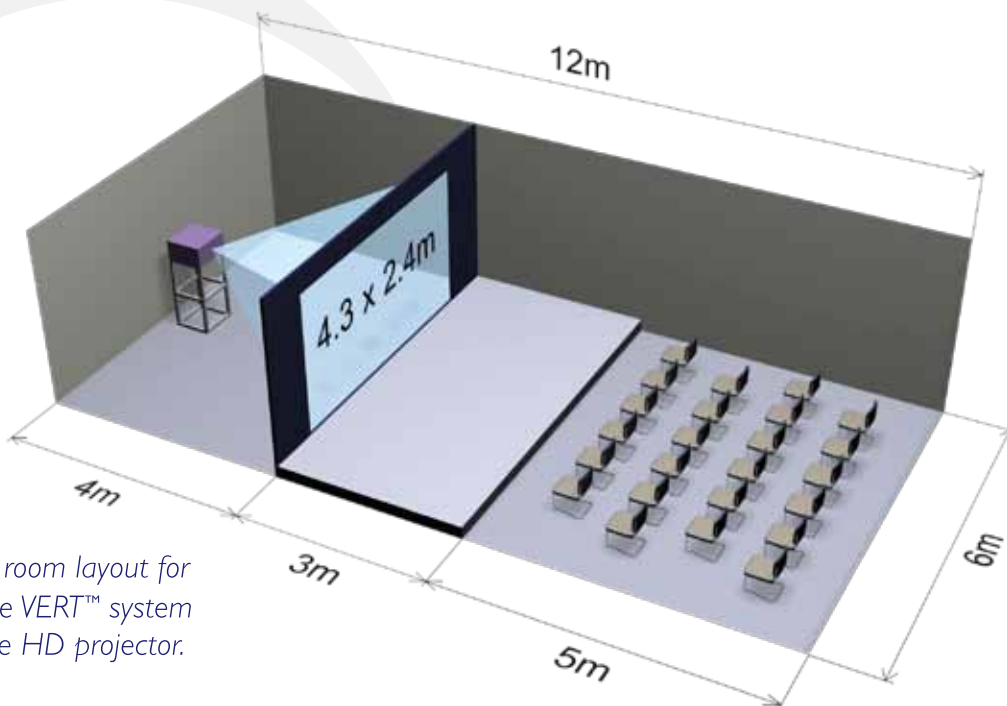
Immersive VERT™ with screen size of 3.2 x 2.4m

LINACS: VERT™ is available with fully articulated realistic virtual models of Varian, Elekta and Siemens linacs. Users control these virtual linacs via their respective real control pendants.

TRACKING: For the added sense of immersion in the virtual radiation therapy treatment room, VERT™'s tracking option allows a user to walk around the couch and patient which to them appears stationary. To achieve this, the position of the user's viewpoint is tracked. Tracking is beneficial for practising complex patient set-ups.

PROJECTORS: 3D projection in VERT™ is provided by industrial strength, robust, triple DLP® active projectors designed for continuous use. A range of projector configurations provides you with a screen size that will suit your needs and accommodation requirements. Typical configurations are:

| | Projectors | Screen Size (m) | Screen Resolution | Lumens |
|----------------|------------|-----------------|-------------------|--------|
| SINGLE CHANNEL | 1 | 3.2 x 2.4 | 1400 x 1050 | 6K |
| SINGLE HD | 1 | 4.3 x 2.4 | 1920 x 1080 | 8K |
| DUAL CHANNEL | 2 | 5.4 x 2.4 | 2400 x 1050 | 6K |



Example of room layout for an Immersive VERT™ system with a single HD projector.

DISPLAYS AND CONTROLS: Immersive VERT™ includes a wall mounted panel for the display of a simulated RT in-room monitor, portal images and cone beam CT images. There is also a touch panel for controlling VERT™ which along with Virtual Presenter™ provides the tutor with a very effective interface for driving VERT™ whilst reducing the need to display 2D information on the 3D screen.

IMMERSIVE LIGHT: This uses the same high quality projection technology as the Immersive VERT™ systems, but with a trimmed system specification that provides a lower cost entry point for a rear projected VERT™ system.

| | IMMERSIVE | IMMERSIVE LIGHT |
|---------------------------|-----------------------|------------------|
| LINAC MODELS AND PENDANTS | I + 2 AS OPTIONS | I + 2 AS OPTIONS |
| 3D GLASSES | 30 | 20 |
| TRACKING SYSTEM | OPTION | NOT AVAILABLE |
| IN-ROOM RT DISPLAY | YES | OPTION |
| VERT TOUCH PANEL CONTROL | YES | OPTION |
| SYSTEM CONTROL | DEDICATED TOUCH PANEL | WEB INTERFACE |
| LICENSES | 3D + 4 PC's | 3D + 2 PC's |
| GRAPHICS WORKSTATION | PREMIUM | STANDARD |
| LAPTOP INPUT | YES | YES |
| SUPPORT | I YEAR | I YEAR |

For enquiries on Immersive VERT™ systems please contact us on +44 (0)1482 347572, email info@vertual.co.uk or contact your local distributor (see www.vertual.co.uk)

