

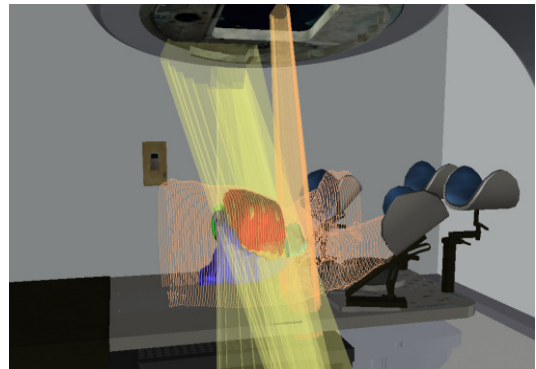
Announcing the Release of VERT 2.6

Vertual Ltd is proud to announce the release of VERT 2.6. This is a significant step forward for VERT, including many new features designed in collaboration with our users.

Key Developments

- Multiple Beam Display
- Multiple Reconstructed Planes for CT
- Enhanced Dose Colourwash Functions
- Support for Varian Gantry Display
- Enhanced IGRT Access
- Simulated Couch Controls, all Linac Models
- Enhanced DRR Functionality
- Markers and Points of Interest

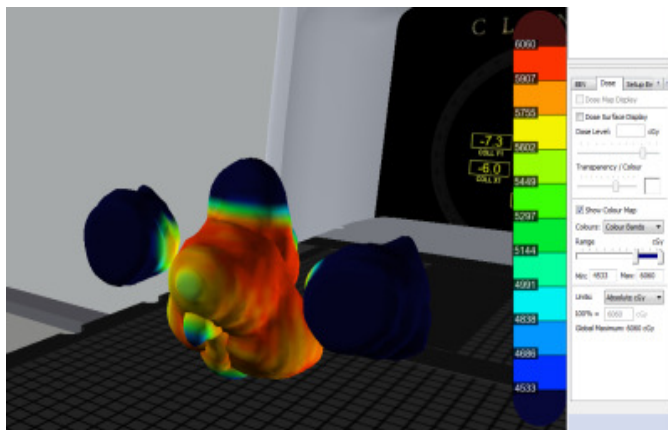
Multiple Beam Display



Multiple beams displayed on a breast plan

- Multiple beams displayed simultaneously
- Beam colours can be changed individually
- Direction of travel is displayed for Arc beams

Enhanced Dose Display



Dose Colourwash display with colour map

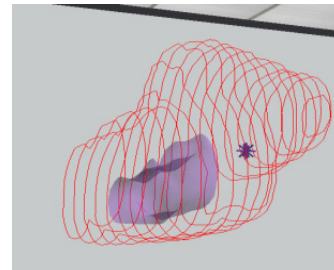
- Colour map with graduated scale
- Select from different colour maps: Colour wash, Colour bands and Threshold options
- Dose can be fixed at isocentre so that set up error effects on dose can be better demonstrated

Dose Units

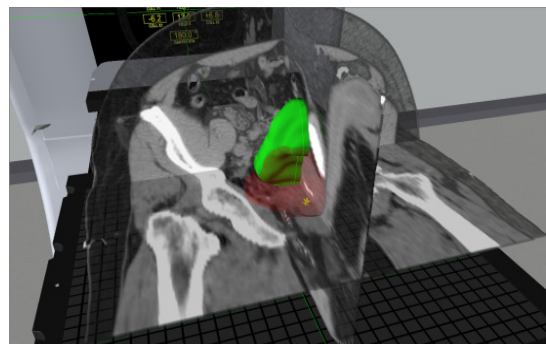
- Display dose in Absolute (cGy or Gy) and Relative mode
- Consistent use of dose units throughout the software

Markers / POI

- Now supported in multiple sizes and shapes



Multi-plane CT



- Sagittal, Coronal and Transverse planes are supported - in any combination

Remote Monitor Support

Display the following on a separate screen from the main VERT display (separate PC or touchscreen):

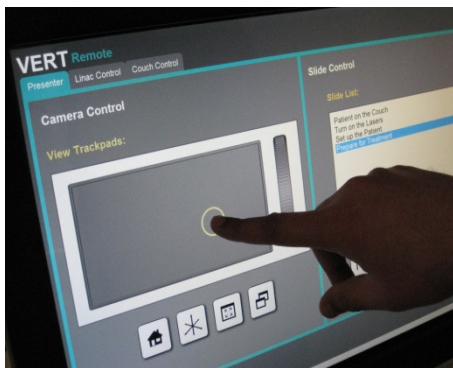
- Beam Eye View / Portal Images
- IGRT Control
- In room monitor display
- Enhanced IGRT access
- Virtual Couch controls, all Linac models

Enhanced Monitor Display

1337 - VERT Linac 1		Clinical		01/04/2010		12:10:42	
Name...	Field...	Set	Actual				
Gantry Angle.....		0.0	15.0 deg				
Collimator Angle.....		0.0	0.0 deg				
Diaphragm Y2.....		+10.0	+6.4 cm				
Diaphragm Y1.....		-10.0	+0.6 cm				
Diaphragm X2.....		+10.0	+10.0 cm				
Diaphragm X1.....		-10.0	-10.0 cm				

Set and actual are now displayed with inhibits indicated

Touchscreen Presenter



Virtual Presenter slides can be advanced, the view position and linac can be moved using the touchscreen

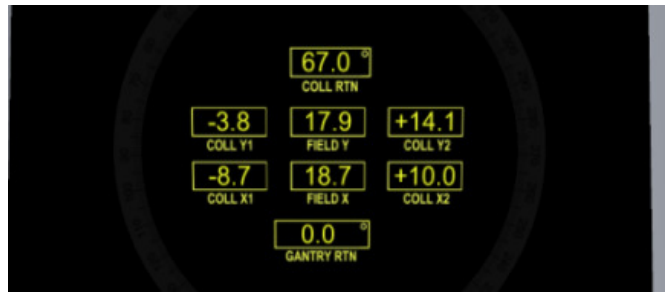
Virtual Couch Controls

All 3 linac manufacturers are supported. Each can be used to drive the Virtual linac using the touchscreen display*



* Additional touchscreen hardware is required, please contact sales@vertual.co.uk for further information

Varian Gantry Display

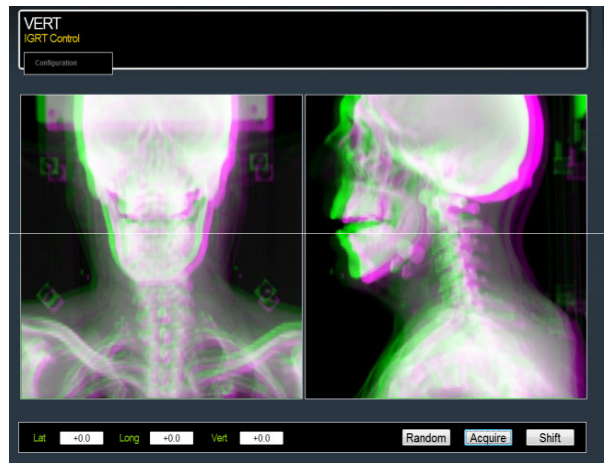


The Varian gantry display: now interactive with the settings and movement within VERT

Enhanced DRR Functionality

- Greater control over image quality and contrast
- Window / Level controls
- Option for bone or soft tissue DRR image

Enhanced IGRT Support



- Matching of reference and "today's" DRR
- Easily accessed from remote monitor display
- Control using mouse or optional touchscreen